

# Head Lamps

Car Head Lamp

Universal Lamp

Commercial Vehicle Lamp

Utility Vehicle Lamp



*Excellence in Lighting*





Excellence in Lighting

# UNIVERSAL HEAD LAMPS

UNIVERSAL



Fig. No. 69

## 7" (178mm) ROUND HEAD LAMP UNIT (CONVENTIONAL)

Fig. No.	Part Number	Bulb Fitment	Traffic		Parking		'E' Mark	Standard Packing
			LEFT	RIGHT	WITH	WITHOUT		
69	HL-101 AS	R2 P43x	✓	✓	✓	✓	'E'	18 PCS.
69	HL-101 H4	H4 P43x	✓	✓	✓	✓	'E'	18 PCS.
69	HL-101 BPF	BPF	✓					18 PCS.
69	HL-102 AS	R2 P43x	✓	✓	✓	✓	'E'	18 PCS.
69	HL-102 H4	H4 P43x	✓	✓	✓	✓	'E'	18 PCS.

- HL-101 - Curved Lens, HL-102 - Raised F at Lens
- Also available with DTP (Display Twin Pack) - Standard Packing - 6 Sets.



## 7" (178mm) ROUND HEAD LAMP UNIT (MULTI SURFACE REFLECTOR)

Fig. No.	Part Number	Bulb Fitment	Traffic		Parking		'E' Mark	Standard Packing
			LEFT	RIGHT	WITH	WITHOUT		
70	HL-101 H4 MSR M*	H4 P43i	✓	✓	✓	✓		18 PCS.
70	HL-101 BPF MSR M*	BPF	✓		✓	✓		18 PCS.
70	HL-101 H4 MSR B*	H4 P43i	✓	✓	✓	✓	'E'	18 PCS.
70	HL-102 H4 MSR M*	H4 P43i	✓	✓	✓	✓		18 PCS.
70	HL-102 H4 MSR B*	H4 P43i	✓	✓	✓	✓	'E'	18 PCS.

- HL-101 - Curved Lens, HL-102 - Raised Flx Lens
- Also available with DTP (Display Twin Pack) - Standard Packing - 6 Sets.



Fig. No. 70

\* MSR B - BMC REFLECTOR  
 \* MSR M - METAL REFLECTOR  
 \* DTP - DISPLAY TWIN PACK

• All the Trademarks mentioned in the Catalogue are the property of their respective owners.  
 • All Products shown in this Catalogue are replacement parts.

# UNIVERSAL HEAD LAMPS



Excellence in Lighting



Fig. No. 71

## 5 1/4" (146mm) ROUND HEAD LAMP UNIT

Fig. No.	Part Number	Bulb Fitment	Traffic		Parking		'E' Mark	Standard Packing
			left	right	with	without		
71	HL-103 AS	R2 P45i	✓		✓	✓	E	32 PCS.
71	HL-103 H4	H4 P42i	✓	✓	✓	✓	E	32 PCS.
71	HL-103 H1	H1				✓	E	32 PCS.
71	HL-104 H4	H4 P42i	✓	✓	✓	✓	E (LHT)	32 PCS.
71	HL-104 H1	H1				✓	E	32 PCS.

- HL-103 - Curved Lens, HL-104 - Raised Flat Lens
- Also available with DTP (Display Twin Pack) - Standard Packing - 6 Sets.

UNIVERSAL



## 5 1/4" (146mm) ROUND HEAD LAMP UNIT

Fig. No.	Part Number	Bulb Fitment	Traffic		Parking		'E' Mark	Standard Packing
			left	right	with	without		
72	HL-103 H4 MSR M*	H4	✓			✓		32 PCS.
72	HL-103 H4 MSR B*	H4	✓			✓		32 PCS.
72	HL-104 H1 MSR M*	H1				✓	E	32 PCS.
72	HL-104 H4 MSR M*	H4 P42i	✓	✓	✓	✓		32 PCS.
72	HL-104 H4 MSR B*	H4 P42i	✓		✓	✓		32 PCS.

- HL-103 - Curved Lens, HL-104 - Raised Flat Lens
- Also available with DTP (Display Twin Pack) - Standard Packing - 6 Sets.



Fig. No. 72

\* MSR B - BMC REFLECTOR  
 \* MSR M - METAL REFLECTOR  
 \* DTP - DISPLAY TWIN PACK

• All the Trademarks mentioned in the Catalogue are the property of their respective owners.  
 • All Products shown in this Catalogue are replacement parts.



Fig. No. 73

## 165 x 106 mm RECTANGULAR HEAD LAMP UNIT (CONVENTIONAL)

Fig. No.	Part Number	Bulb Fitment	Traffic		Parking		E <sup>1</sup> Mark	Standard Packing
			LH <sup>1</sup>	RH <sup>1</sup>	with	without		
73	HL-106 AS	R2 P45t	✓	✓	✓	✓	E <sup>1</sup>	18 PCS.
73	HL-106 H4	H4 P43i	✓	✓	✓	✓	E <sup>1</sup>	18 PCS.
73	HL-106 H1	H1				✓	E <sup>1</sup>	18 PCS.

\* Also available with DTP (Display Twin Pack) - Standard Packing - 6 Sets.



## 165 x 106mm RECTANGULAR HEAD LAMP UNIT (MULTI SURFACE REFLECTOR)

Fig. No.	Part Number	Bulb Fitment	Traffic		Parking		E <sup>1</sup> Mark	Standard Packing
			LH <sup>1</sup>	RH <sup>1</sup>	with	without		
74	HL-106 H1 MSR M <sup>*</sup>	H1				✓	E <sup>1</sup>	18 PCS.
74	HL-106 H4 MSR M <sup>*</sup>	H4 P43i	✓	✓	✓	✓		18 PCS.
74	HL-106 H4 MSR B <sup>*</sup>	H4 P43i	✓	✓		✓		18 PCS.

\* Also available with DTP (Display Twin Pack) - Standard Packing - 6 Sets.



Fig. No. 74

<sup>1</sup> MSR B - BMC REFLECTOR  
<sup>1</sup> MSR M - METAL REFLECTOR  
<sup>\*</sup> DTP - DISPLAY TWIN PACK

♦ All the Trademarks mentioned in the Catalogue are the property of their respective owners.  
 ♦ All Products shown in this Catalogue are replacement parts.

# UNIVERSAL HEAD LAMPS



Excellence in Lighting



Fig. No. 75

## 200 x 142 mm RECTANGULAR HEAD LAMP UNIT (CONVENTIONAL)

Fig. No.	Part Number	Bulb Fitment	Traffic		Parking		'E' Mark	Standard Packing
			L/R	R/L	with	without		
75	HL-109 AS	R2 P43i	✓	✓	✓	✓	'E'	12 PCS.
75	HL-109 H4	H4 P43i	✓	✓	✓	✓	'E'	12 PCS.

• Also available with DTP (Display Twin Pack) - Standard Packing - 6 Sets.



UNIVERSAL

## 200 x 142 mm RECTANGULAR HEAD LAMP UNIT (MULTI SURFACE REFLECTOR)

Fig. No.	Part Number	Bulb Fitment	Traffic		Parking		'E' Mark	Standard Packing
			L/R	R/L	with	without		
76	HL-109 H4 MSR M*	H4 P43i	✓	✓	✓	✓	'E' (LHT)	12 PCS.
76	HL-109 H4 MSR B*	H4 P43i	✓	✓	✓	✓	'E'	12 PCS.

• Also available with DTP (Display Twin Pack) - Standard Packing - 6 Sets.



Fig. No. 76

\* MSR B - SMC REFLECTOR  
\* MSR M - METAL REFLECTOR  
\* DTP - DISPLAY TWIN PACK

• All the Trademarks mentioned in the Catalogue are the property of their respective owners.  
• All Products shown in this Catalogue are replacement parts.



Excellence in Lighting

## UNIVERSAL HEAD LAMPS

UNIVERSAL

### 178mm Head Lamp Unit (Round) Multi Surface Aluminium Die Cast Reflector

HL 102 H4 DIE CAST
BULB FITMENT :HB2(9003)/ H4 P43t
TRAFFIC : RHT
STD. PKG. : 12 PCS.

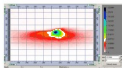


Fig No.  
77

### 200 mm Head Lamp Unit (Rectangular) Multi Surface Aluminium Die Cast Reflector

HL 109 H4 DIE CAST
BULB FITMENT :HB2(9003)/ H4 P43t
TRAFFIC : RHT
STD. PKG. : 12 PCS.

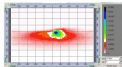


Fig No.  
78

### 178mm Head Lamp Unit (Round)

HL 102 HB2
BULB FITMENT :HB2(9003)/ H4 P43t
TRAFFIC : RHT
STD. PKG. : 18 PCS.



Fig No.  
79

### 200 mm Head Lamp Unit (Rectangular)

HL 109 HB2
BULB FITMENT :HB2(9003)/ H4 P43t
TRAFFIC : RHT
STD. PKG. : 12 PCS.



Fig No.  
80

♦ All the Trademarks mentioned in the Catalogue are the property of their respective owners.  
♦ All Products shown in this Catalogue are replacement parts.